

# BIRMINGHAM

## HYDRAULIC PRESS BRAKES



**HB-175126**

### MAIN FEATURES:

#### 1. CONSTRUCTION

The frame is high tension, stress released steel plate and rigidly bolted/welded to manufacture strong/un-transform machine body.

#### 2. WIDE GUIDEWAY

To ensure the movement of the guideblock more smoothly and stable for high accuracy.

#### 3. MECHANICAL PARALLEL DEVICE

The compulsory synchronization of the mechanical structure to ensure the top die and bottom die fully parallel at any position of stroke movement.

#### 4. HYDRAULIC OIL TANK & PUMP

A large tank allows the oil to run smoothly and efficiently. The high-efficiency, low-noise pump improves the quality of the working environment.

#### 5. STROKE

Depth positioning by accurate mechanical stops inside the cylinder to ensure every bending to the same angle. Adjustable strokes shorten machine time.

#### 6. SAFETY FOOT CONTROL

Removable foot control pedal with safety protection. The upper die beam is raised back to the top position immediately upon the operator removing his foot from the pedal.

#### 7. HYDRAULIC SYSTEM

High-efficient hydraulic circulation system, quality solenoids and two powerful cylinders provide maximum and stable output to execute excellent performance. Ram downward by two-step speed, fast-speed approaching and slow-speed press bending to shorten the circulation time. Easy setting work pressure by stepless regulator with overload protection device to provide a proper pressure.

#### 8. SINGLE-SIDE MICRO ADJUSTMENT

Two micro-fine adjusting bending angles, this device provides two directional adjustments, increase or decrease bending angle(s), to achieve uniform angle on both ends of the bent workpiece.

#### 9. DIES

One-piece upper die. One-piece 4-way bottom die. Multi-size V-slot design to meet most bending applications,

#### 10. POWER BACK GAUGE

Motorized precision ballscrew type back gauge with readout display and micro adjustor. Resolution 0.004".



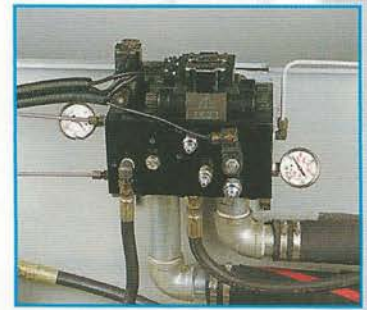
# BIRMINGHAM HYDRAULIC PRESS BRAKES



**HB-5059**



**HB-3350**

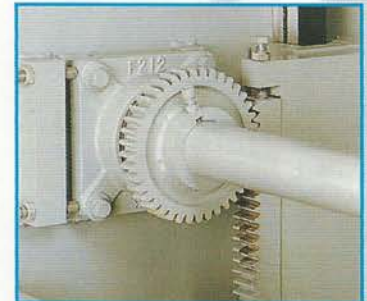


• Hydraulic System

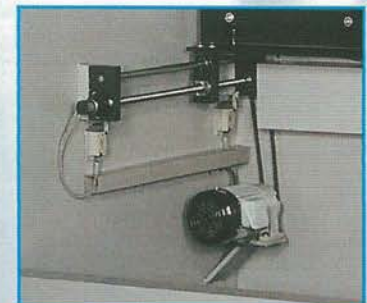
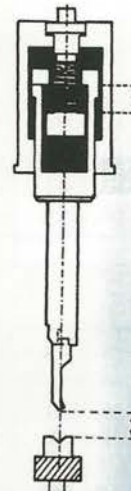


• Power Bending Angle (Depth Positioning) setting device with manual micro adjuster and readout display control panel.

• Depth Positioning (Bending Angle) by mechanical stops in the cylinders.



• Rigid Parallel Mechanism



• Ballscrew Power Back Gauge



• Bottom Die/Table Hydraulic Support, ensure bent workpiece in straight alignment.





# SPECIFICATIONS: FOR BIRMINGHAM HYDRAULIC PRESS BRAKES

MODEL	BENDING LENGTH CAPACITY	MAXIMUM PRESSURE (TONS)	DISTANCE BETWEEN UPRIGHTS (IN.)	RAM STROKE (IN.)	TABLE WIDTH (IN.)	DISTANCE BETWEEN TABLE/RAM (IN.)	OIL TANK (GAL.)	MAIN MOTOR (HP)	APPROACH SPEED (IN./SEC.)	BENDING SPEED (IN./SEC.)	RETURN SPEED (IN./SEC.)	POWER BACK GAUGE (IN.)	BACK GAUGE MOTOR (HP)	THROAT DEPTH (IN.)	NET WEIGHT (LBS.)	PACKING SIZE (IN.)
HB-2250	50"	22	41 1/2"	6"		10	20	3HP	4	1/4	2.5	24 (OPT)	1/4 (OPT)	8	2,500	59 x 47 x 81
HB-2262	62"	22	50"	6"		10	20	3HP	4	1/4	2.5	24 (OPT)	1/4 (OPT)	8	3,000	73 x 47 x 81
HB-2280	80"	22	65"	6"	1 1/2"	10	20	3HP	4	1/4	2.5	24 (OPT)	1/4 (OPT)	8	3,600	91 x 47 x 81
HB-3850	50"	38	41 1/2"	6"	Bottom Die Holder Width	10	24	5HP	4	1/4	2.5	24 (OPT)	1/4 (OPT)	8	4,400	59 x 51 x 85
HB-3862	62"	38	50"	6"		10	24	5HP	4	1/4	2.5	24 (OPT)	1/4 (OPT)	8	5,000	73 x 51 x 85
HB-3880	80"	38	65"	6"		10	24	5HP	4	1/4	2.5	24 (OPT)	1/4 (OPT)	8	6,000	91 x 51 x 85
HB3350	50"	33	38"	6"		10	20	3HP	4	.27	2.36	24 (OPT)	1/4 (OPT)	8	2,800	55 x 47 x 81
HB-3361	61"	33	49"	6"		10	24	3HP	4	.27	2.36	24 (OPT)	1/4 (OPT)	8	3,500	67 x 47 x 81
HB-3380	80"	33	61"	6"		10	24	3HP	4	.27	2.36	24 (OPT)	1/4 (OPT)	8	5,500	91 x 47 x 81
HB-5059	59"	50	49"	6"		10	28	5HP	4	.27	2.36	24 (OPT)	1/4 (OPT)	8	6,500	75 x 51 x 87
HB-6680	80"	66	61"	6"	6 1/4"	12	35	7.5HP	4	.27	2.36	24	1/2 (HP)	8	8,000	91 x 61 x 95
HB-66102	102"	66	83"	6"	6 1/4"	12	35	7.5HP	4	.27	2.36	24	1/2 (HP)	8	9,200	114 x 61 x 96
HB-66126	126"	66	102"	6"	6 1/4"	12	35	7.5HP	4	.27	2.36	24	1/2 (HP)	8	10,000	138 x 61 x 97
HB-8880	80"	88	61"	6"	6 1/4"	12	45	7.5HP	4	.23	2.36	24	1/2 (HP)	8	9,200	95 x 63 x 95
HB-88102	102"	88	83"	6"	6 1/4"	12	45	7.5HP	4	.23	2.36	24	1/2 (HP)	8	11,500	118 x 63 x 96
HB-88126	126"	88	102"	6"	6 1/4"	12	45	7.5HP	4	.23	2.36	24	1/2 (HP)	8	12,500	142 x 63 x 97
HB-120102	102"	120	83"	8"	8"	14	55	10HP	4	.23	2.36	24	1/2 (HP)	10	14,000	120 x 65 x 99
HB-120126	126"	120	102"	8"	8"	14	55	10HP	4	.23	2.36	24	1/2 (HP)	10	16,000	144 x 65 x 100
HB-120157	157"	120	134"	8"	8"	14	55	10HP	4	.23	2.36	24	1 (HP)	10	20,000	175 x 71 x 102
HB-175102	102"	175	83"	8"	8"	16	80	15HP	4	.23	2.36	32	1 (HP)	10	18,000	120 x 71 x 104
HB-175126	126"	175	100"	8"	8"	16	80	15HP	4	.23	2.36	32	1 (HP)	10	22,300	144 x 71 x 106
HB-175157	157"	175	132"	8"	8"	16	80	15HP	4	.23	2.36	32	1 (HP)	10	29,000	177 x 71 x 110
HB-240102	102"	240	83"	8"	8"	16	100	20HP	4	.23	2.36	32	1 (HP)	10	24,500	122 x 77 x 114
HB-240126	126"	240	98"	8"	8"	16	100	20HP	4	.23	2.36	32	1 (HP)	10	27,000	146 x 79 x 116
HB-240157	157"	240	130"	8"	8"	16	100	20HP	4	.23	2.36	32	1 (HP)	10	33,500	177x 71 x 126

• ALL SPECIFICATIONS AND DESIGNS ARE SUBJECT TO CHANGE WITHOUT PRIOR NOTICE.

### STANDARD EQUIPMENT:

- 24" or 32" ballscrew back gauge with digital counter display and front control (optional for 22/33/38/50 ton model).
- 24" front operated manual ballscrew back gauge with digital counter and micro adjustor (22/33/38/50 ton models).
- 24" (2) front support arms.
- Powered bending angle setting device (opt: 22/33/38/50 ton models).
- Hydraulic bottom-die angle compensation (opt: 22/33/38/50 ton models).
- One top die and one 4-way bottom die (6Vs for 66ton and over, single V for 50tons and lower).
- Control panel with all switch low voltage wired.
- Removable foot pedal with safety protection housing.
- Tool box with maintenance tools and leveling pads.

### OPTIONAL ACCESSORIES:

- 24" Power ballscrew back gauge with digital counter display and front control (for 22/33/38/50 ton models only).
- Powered bending angle setting device (22/33/38/50 ton models only).
- Hydraulic bottom-die angle compensation (22/33/38/50 ton models only).
- Safety sensor protection system.
- Power grease injecting system.
- Larger throat depth per customer's request.
- Special custom die.
- 2 axis NC back gauge with German ELGO #P8822